

AVAILABLE

Medical Office Space for Lease/Sale



321 W. Wendover Avenue
Greensboro, NC 27408

Great Location off of
Wendover.
Built in 1980.
Perfect for medical office.



LEASE PRICE
\$15.00 NNN
SALE PRICE
\$1,500,000

COMMERCIAL REAL ESTATE

**SIMPSON
SCHULMAN
& BEARD**
COMMERCIAL REAL ESTATE

FOR MORE INFORMATION

336.282.3773

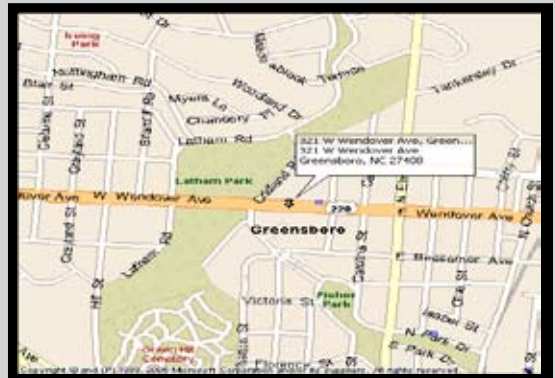
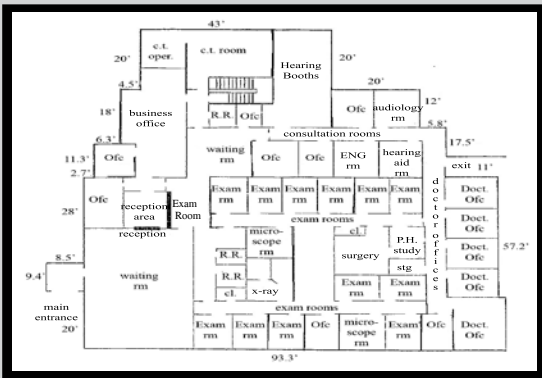
125 South Elm Street Suite 103, Greensboro, NC 27401
www.simpsonandschulman.com

AVAILABLE

Medical Office Space for Lease/Sale

10,200 SF

Building Size	8,440 SF above Grade 1,770 finished Basement
Site Acreage	0.997 Acres
Zoning	GOM
Parking	48 Spaces
Lease Rate	\$15.00 NNN
Sale Price	\$1,500,000



COMMERCIAL REAL ESTATE

336.282.3773 • 125 South Elm Street Suite 103, Greensboro, NC 27401 • www.simpsonandschulman.com

All information provided regarding property for sale, lease, or financing is from sources deemed reliable, but no warranty or representation is made as to the accuracy thereof and same is submitted subject to errors, omissions, change of price, lease or other conditions, prior sale, lease or financing or withdrawal without notice. No liability of any kind is to be imposed on the broker herein.